









An attractive three bedroom semi-detached house, ideally situated in this popular residential area, available with no upper chain involved. Internally on the ground floor there is an entrance lobby with staircases to the first floor, lounge, a fitted kitchen and a downstairs wc whilst to the first floor there are three bedrooms and a bathroom/wc. Externally there are gardens to the front and rear. This convenient location is well placed for an excellent range of amenities, shops and schools, as well as offering access to Sunderland City Centre and major road links. Early viewing essential!

# MAIN ROOMS AND DIMENSIONS

## Ground Floor

Access via UPVC entrance door into the entrance lobby.

### Entrance Lobby



Stairs to first floor and door to the lounge.

### Lounge 11'8" x 14'4"



Double glazed window to front, double radiator, feature fire, built in storage, and a door to the kitchen.

### Kitchen 14'0" x 9'11"



Range of wall and base units with countertops over incorporating 1 1/2 bowl stainless steel sink and drainer unit with mixer tap. Space provided for an oven, washing machine and fridge freezer. Double radiator, 2x double glazed windows to rear and a door to rear hall.

## Rear Lobby

UPVC door to rear and doors to WC and utility cupboard.

### Downstairs WC



Low level WC, double glazed window to the rear.

### Utility

Housing wall mounted boiler and a double glazed window to the side.

## First Floor Landing



Landing with double glazed window to the side and access point to loft.

### Bedroom 1 10'8" x 10'5"



Double glazed window to the front and a radiator.

### Bedroom 2 8'1" x 14'0"



Double glazed window to the rear and a radiator.

Visit [www.peterheron.co.uk](http://www.peterheron.co.uk) or call 0191 510 3323

Tried. Trusted. Recommended. City Branch 20 Fawcett Street Sunderland SR1 1RH Fulwell Branch 15 Sea Road Fulwell Sunderland SR6 9BS

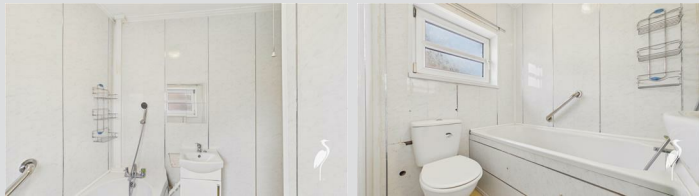
# MAIN ROOMS AND DIMENSIONS

## Bedroom 3 6'7" x 10'9"



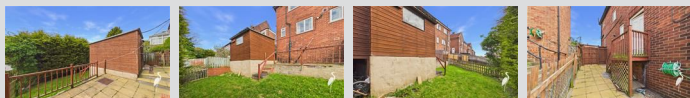
Double glazed window to the rear, radiator, built in sliding door wardrobes.

## Bathroom



Low level WC, wash hand basin set into vanity unit, bath with shower over and a double glazed window.

## Outside



Garden to front laid mainly to lawn with a block paved area whilst to the rear there is an attractive garden with a lawn and raised paved seating area. The property also benefits from a large shed.

## Council Tax Band

The Council Tax Band is Band A.

## Tenure Freehold

We are advised by the Vendors that the property is Freehold. Any prospective purchaser should clarify this with their Solicitor.

## Important Notice - Particulars

Peter Heron Ltd for themselves and for the vendors of this property whose agents they are, give notice that:- The particulars are set out for general guidance only for the intending Purchasers and do not constitute part of an offer or contract. Whilst we endeavour to make our sales particulars accurate and reliable, if there is anything of particular importance which you feel may influence your decision to purchase, please contact the office and we will be pleased to check the information. Do so particularly, if contemplating travelling some distance to view the property. All descriptions, dimensions, references to conditions and necessary permissions for use and occupation and other details are given in good faith, and are believed to be correct, however any intending purchasers should not rely on them that statements are representations of fact, but must satisfy themselves by inspection or otherwise as to the correctness of each of them. Independent property size verification is recommended.

Lease details, service charges and ground rent (where applicable) are given as a guide only and should be checked and confirmed by your Solicitor prior to exchange of contracts. No person in the employment of Peter Heron Ltd has any authority to make or give any representation or warranty whatever in relation to this property or these particulars, nor to enter into any contract on behalf of Peter Heron Ltd, nor into any contract on behalf of the Vendor. The copyright of all details and photographs remain exclusive to Peter Heron Ltd.

Please note that in the event the purchaser uses the services of Peter Heron Conveyancing in the purchase of

their home, Peter Heron Ltd will be paid a completion commission of £300.00 by Movewithus Ltd.

## Fawcett Street Viewings

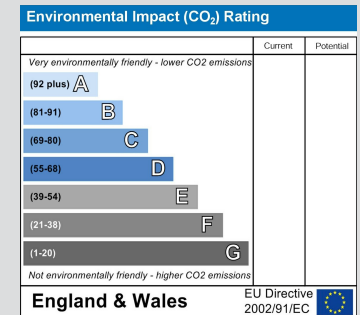
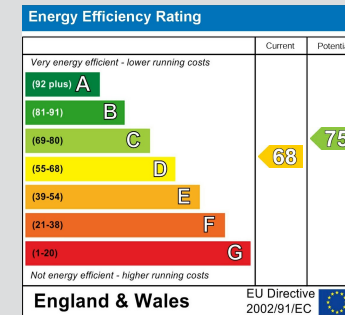
To arrange an appointment to view this property please contact our Fawcett Street branch on 0191 510 3323 or book viewing online at peterheron.co.uk

## Opening Times

Monday to Friday 9.00am - 5.00pm Saturday 9.00am - 12noon

## Ombudsman

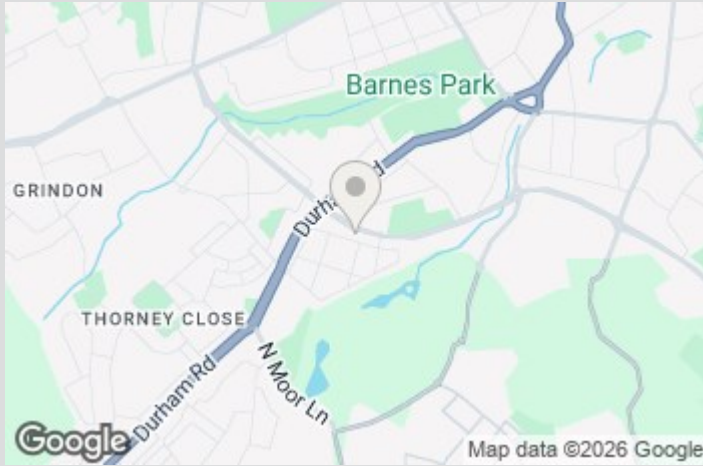
Peter Heron Estate Agents are members of The Property Ombudsman and subscribe to The Property Ombudsman Code of Practice.



Visit [www.peterheron.co.uk](http://www.peterheron.co.uk) or call 0191 510 3323

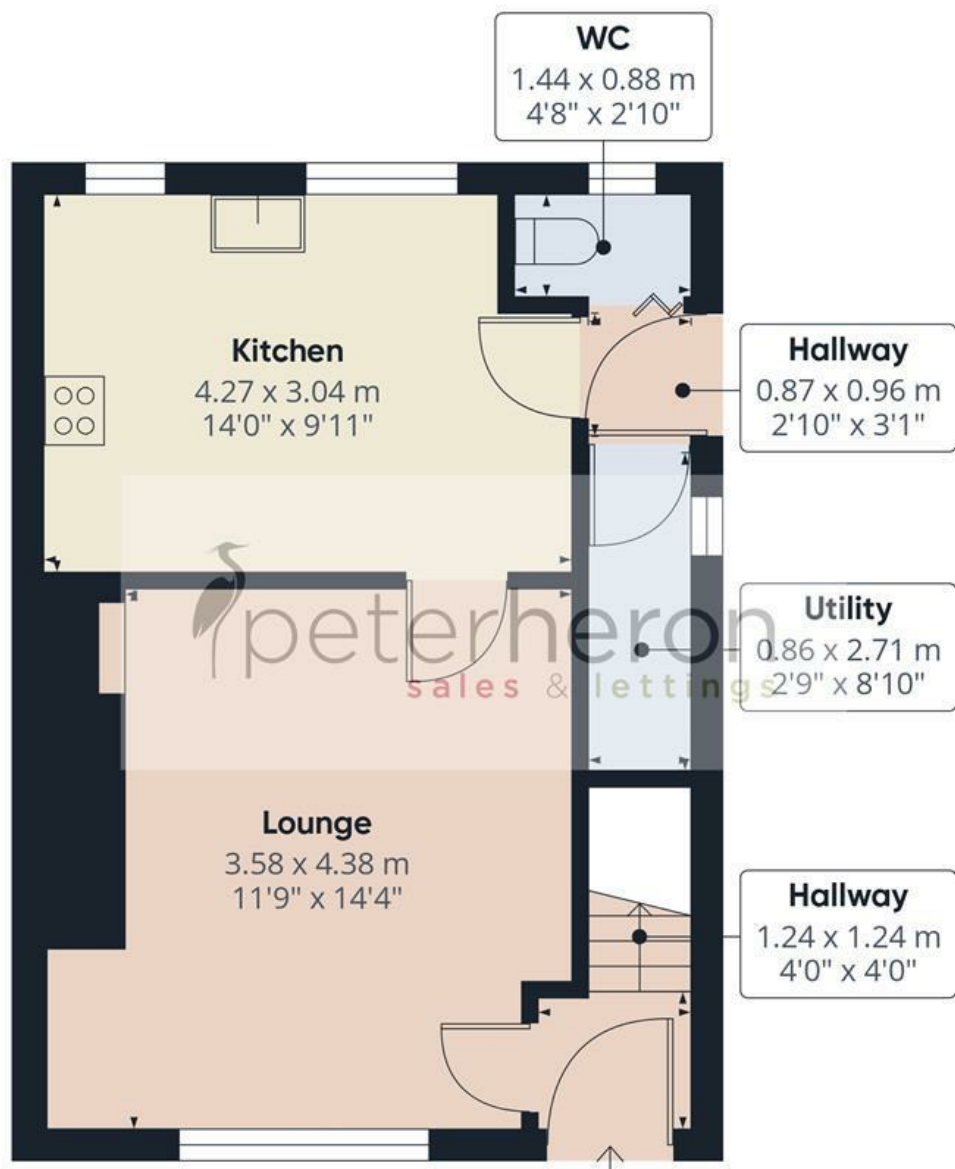
Tried. Trusted. Recommended. City Branch 20 Fawcett Street Sunderland SR1 1RH Fulwell Branch 15 Sea Road Fulwell Sunderland SR6 9BS

## MAIN ROOMS AND DIMENSIONS

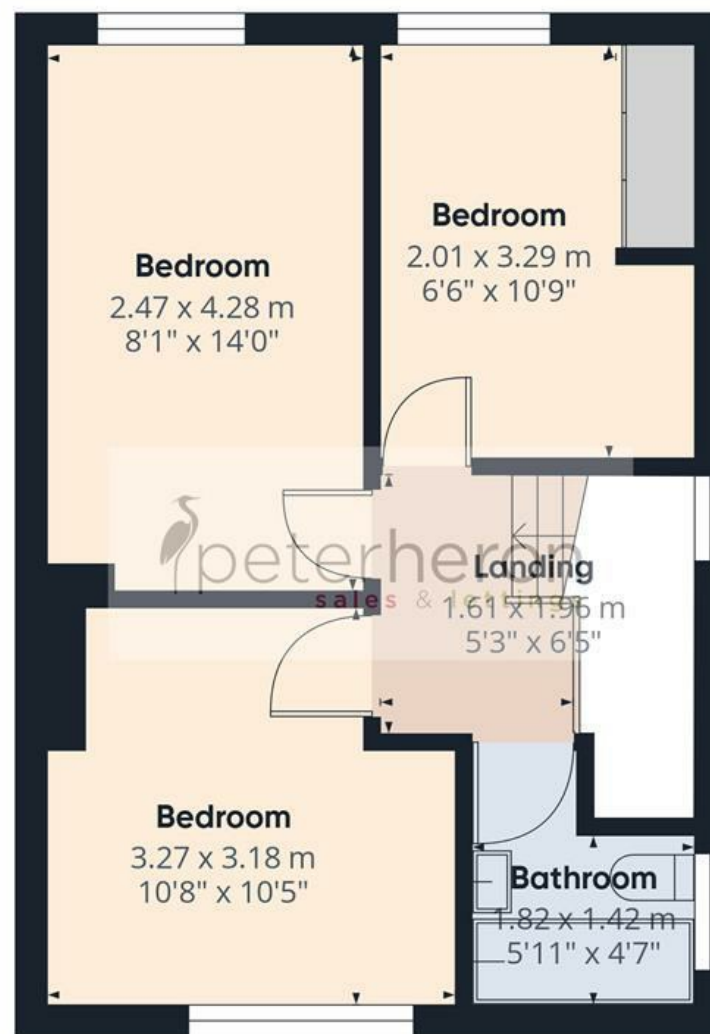


Visit [www.peterheron.co.uk](http://www.peterheron.co.uk) or call **0191 510 3323**

**Tried. Trusted. Recommended.** City Branch 20 Fawcett Street Sunderland SR1 1RH Fulwell Branch 15 Sea Road Fulwell Sunderland SR6 9BS



Ground Floor



First Floor

Approximate total area<sup>(1)</sup>

70.6 m<sup>2</sup>

760 ft<sup>2</sup>

Reduced headroom

0.1 m<sup>2</sup>

1 ft<sup>2</sup>

(1) Excluding balconies and terraces

Reduced headroom

Below 1.5 m/5 ft

Calculations reference the RICS IPMS 3C standard. Measurements are approximate and not to scale. This floor plan is intended for illustration only.

GIRAFFE360

